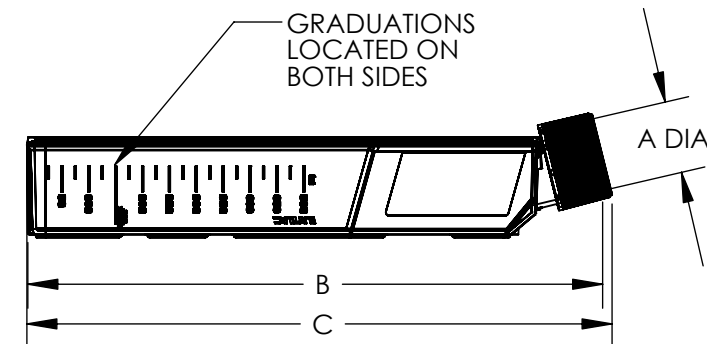
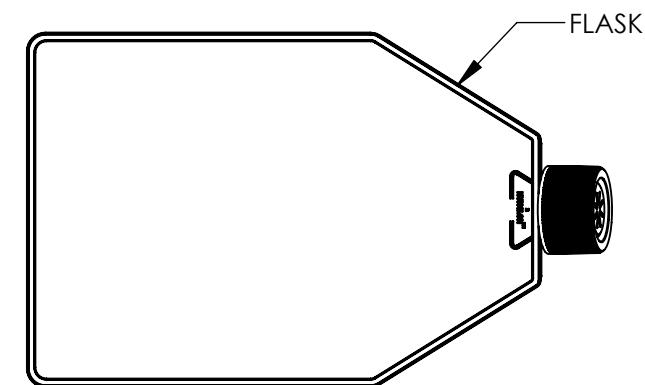


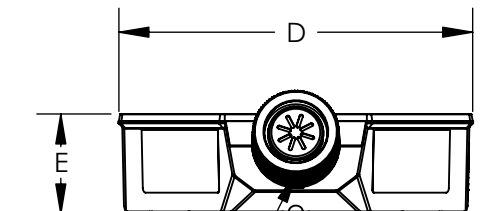
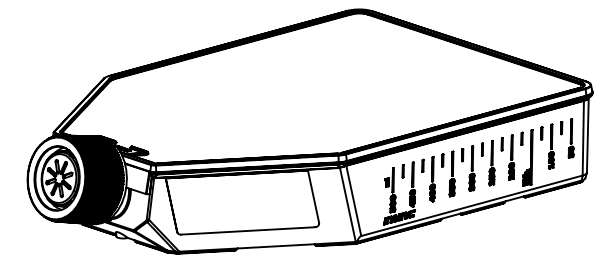
CATALOG NUMBER.....:		159933	159934	
RECOMMENDED WORKING VOL...:		150	150	
MAXIMUM CAPACITY IN UPRIGHT POSITION (mL).....:		800	800	
CAP TYPE.....:		VENT/CLOSE	FILTER	
CULTURE AREA (cm ²).....:		225	225	
MATERIAL	FLASK.....:	PS	PS	
	CAP.....:	BLUE HDPE	BLUE HDPE	
		INCH	MM	INCH
				MM
A (NECK I.D.).....:		1.04	26.4	1.04
B (LENGTH W/O CAP).....:		9.06	230.1	9.06
C (LENGTH W/ CAP).....:		9.13	231.9	9.13
D (WIDTH).....:		5.54	140.7	5.54
E (HEIGHT).....:		1.57	39.9	1.57



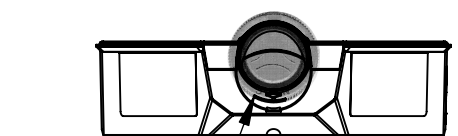
SIDE VIEW



TOP VIEW



END VIEW OF 159933



END VIEW OF 159934

SPECS ON BACK

NOT TO SCALE

CONFIDENTIAL

THIS PRODUCT SPECIFICATION SHEET CONTAINS CONFIDENTIAL AND/OR PROPRIETARY INFORMATION AND IS TO BE USED ONLY FOR THE EXPRESSED PURPOSES AGREED UPON BY AN AUTHORIZED OFFICER OF THERMO FISHER SCIENTIFIC.

ThermoFisher
SCIENTIFIC

Thermo Fisher Scientific
75 Panorama Creek Drive
Rochester, NY 14625-2385, USA

MADE MC2 APP'D PVC
CK'D MP 3/9/06

PSS 15993X

REV. 0306

DESCRIPTION:

EASY FLASK 225CM² WITH CLOSURE

1. ALL DIMENSIONS ARE NOMINAL AND IN INCHES AND MILLIMETERS UNLESS OTHERWISE NOTED.
2. THIS IS NOT A PRODUCTION DRAWING, BUT IS FOR INFORMATIONAL PURPOSES ONLY, AND IS SUBJECT TO CHANGE WITHOUT NOTICE.