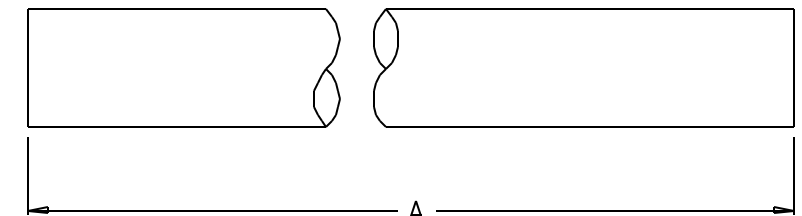
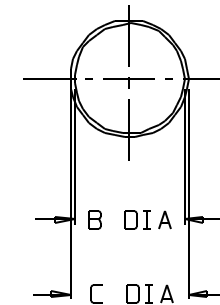


CATALOG NO.....:	5016-0001	
MATERIAL.....:	PVC	
NOM. WEIGHT (gms).....:	10	
	INCHES	MM
A (LENGTH).....:	10.8 ±0.2	254.0 ±5.0
B (DIA).....:	0.575 ±0.010	14.6 ±0.3
C (DIA).....:	0.60 ±0.02	15.2 ±0.5
W.T.(NOM. WALL THK):	0.02	0.5



NOT TO SCALE

SPECS ON BACK

NOT TO SCALE

NOTES:

1. ALL DIMENSIONS ARE NOMINAL AND IN INCHES AND MILLIMETERS UNLESS OTHERWISE NOTED.
2. THIS IS NOT A PRODUCTION DRAWING, BUT IS FOR INFORMATIONAL PURPOSES ONLY, AND IS SUBJECT TO CHANGE WITHOUT NOTICE.

CONFIDENTIAL

THIS PRODUCT SPECIFICATION SHEET CONTAINS CONFIDENTIAL AND/OR PROPRIETARY INFORMATION AND IS TO BE USED ONLY FOR THE EXPRESSED PURPOSES AGREED UPON BY AN AUTHORIZED OFFICER OF THERMO FISHER SCIENTIFIC.

**ThermoFisher**  
SCIENTIFIC

Thermo Fisher Scientific  
75 Panorama Creek Drive  
Rochester, NY 14625-2385, USA

MADE	MCC	APP'D	PVC	PSS 00-5016-0001	REV.
CK'D	PVC		9/28/92		—

DESCRIPTION:

CRYOSLEEVE